



Pressing for Excellence



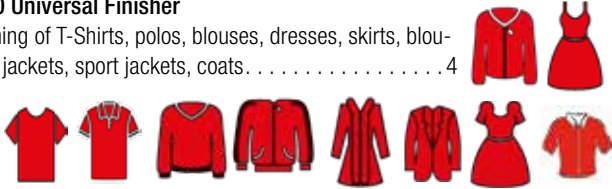
Casual Wear and Finish

Table of Contents

Casual Wear

UF 30 Universal Finisher

Finishing of T-Shirts, polos, blouses, dresses, skirts, blouses, jackets, sport jackets, coats. 4



8363 Multiform Finisher Basic

Finishing of sport jackets, casual jackets, jeans jackets and casual coats. 5



8363 Multiform Finisher Classic

Finishing of sport jackets, casual jackets, jeans jackets and casual coats. 6



PF 50 Pants Finisher

Finishing of jeans, sport trousers and casual trousers. . . 8



PF 30 Pants Finisher

Finishing of jeans, sport trousers and casual trousers. . . 9



8741 Pants Finisher

Finishing of jeans, sport trousers and casual trousers 9-10
 Basic 11
 Medium 11
 High. 11
 Top 11



Trouser Topper Pressing Machine BRI-231 SC

Finishing of trouser top including shaping 12



Utility Pressing Machine BRI-2001 SC

Finishing of various parts 12



Tunnel Finisher / Compact Finisher

Tunnel Finisher 13–27

Compact Finisher 28–29

Technical Data Casual Wear 30

Technical Data Tunnel Finisher /
 Compact Finisher 31

Casual Wear





The all-rounder on 0.5 m²



UF 30 C
Casual



UF 30 B
Blazer



UF 30 U
Universal



UF 30 K
Kids

UF 30

Universal Finisher

The VEIT UF 30 is a flexible and versatile Universal Finisher with an extremely favorable price / performance ratio - Made in Germany. With the new model UF 30, you win the multiplicity of finishing for your company.

Your Benefits:

Multipurpose

- › T-Shirts, polos, blouses, dresses, skirts, blousons, jackets, sport jackets, coats and much more

Efficient

- › Finishing process from 10 seconds depending on garment and application
- › Excellent finishing of 60-250 pieces/h possible (depending on fabric type)

User friendly

- › Adjustable bust height for ergonomic loading and unloading

Easy to operate

- › 360° rotatable bust enables easy loading and best view of the garment
- › Optional front and back pressure clamps in different lengths facilitate the finishing of garments with button tape
- › Optional sleeve clamps ensure an optimised sleeve finish

Control unit

- › Quick and easy adjustment of finishing parameters (steam, steam/air, drying time and air quantity)

UF 30 C: Universal Finisher Casual

- › With casual wear chest

UF 30 B: Universal Finisher Blazer

- › Special chest with lapel clamp for jackets and blazers

UF 30 U: Universal Finisher for long garments: Dresses, skirts, blouses, T-shirts and polo shirts

- › Continuously adjustable shoulder width from 32-52 mm (1.3-2 inch) for all common sizes
- › Easy and quick adjustment of bust height (from 1.05 to 1.36 m / 41 to 54 inch) depending on length of garment
- › Universal cover adjustable in width

UF 30 K: Universal Finisher with special chest for kids wear

- › Sizes range from 6 month – 12 years



8363 Basic

Multiform Finisher

Both models Basic and Classic allow finishing of outer wear in all current sizes with a back length of 620 to 1420 mm / 24 to 56 inch (or 820 to 1620 mm / 32 to 63 inch with an adapter) and hem sizes from 940 to 1660 mm / 37 to 65 inch.

Good value for money

High performance

> (up to 80 pcs/h)

The easy handling of the finisher

> Will allow you to exactly set all parameters. You can fine-tune them perfectly to the requirements of the garments to be finished

Adjustable shoulder width

> From 12.6 to 20.5 inch / 320 to 520 mm

The bust can be pneumatically height-adjusted

> And is adapted to the size of the garment through the operating panel

Powerful but energy saving blower motor

> With electronically adjustable air quantity for all fabrics

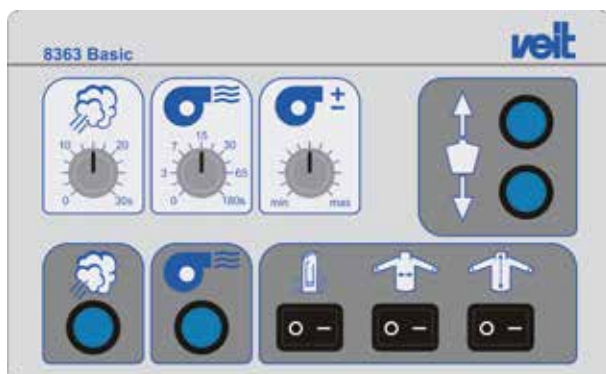
The integrated stretching device

> Lifts the bust during the steaming process (adjustable) and improves the finishing quality

Removable lapel clamp (standard)

Lateral Tensioners

> For sensitive fabrics, just switch off the lateral tensioners as well as the front and back clamps



Control Panel

- > The newly engineered control panel focuses on user-friendliness and simplicity
- > Front and back clamps, side tensioners and retensioning function can be switched on/off easily
- > The air volume can be electronically adjusted with the control panel



8363 Classic

Multiform Finisher

Both models Basic and Classic allow finishing of outer wear in all current sizes with a back length of 620 to 1420 mm / 24 to 56 inch (or 820 to 1620 mm / 32 to 63 inch with an adapter) and hem sizes from 940 to 1660 mm/ 37 to 65 inch. In addition, the 8363 Multiform Finisher offers further functions:

High performance

> (up to 80 pcs/h)

Powerful but energy saving blower motor

> With stepless adjustable air quantity via touch display

The 8363 Classic version will also finish difficult-to-handle garments in top quality and it also offers many extra benefits:

Height adjustment of the bust

> Is performed by an electrical tooth belt drive: This allows a very precise tensioning of the garment without deforming it

Automatic height positioning of the bust

> By a photocell

The standard pneumatically operated side-vent clamps

> Allow finishing of jackets and blazers in perfect quality

The rotating bust

> Facilitates loading

The new VEITouch Control Unit

> Is easy to operate and can create and store up to 10 programs

Adjustable shoulder width

> From 12.6 to 20.5 inch / 320 to 520 mm

The standard lapel clamp can be taken off

In addition to classic garments, many other textiles can be finished, such as sports gear, jeans jackets and coats.

Pneumatic side-vent clamps can be additionally switched on for easy mark-free finishing of jackets with side vents.

The new process sequence enables optimised insertion of different sizes and designs.

The **VEITouch Control Unit** is equipped with a 5.7" touch-screen colour display which shows all functions and parameters at one glance. Also, you can store 10 programs settings and retrieve when needed. For service and maintenance purposes, all functions can be manually controlled through the display.

All input and output functions can be checked at the display. Thus, any defective parts can be identified quickly in the event of disorders. This keeps service costs low.



Trousers Finish





PF 50 Pants Finisher

Cutting edge control technology for a perfect finishing result and process data acquisition for quality assurance.

Your Benefits:

Intuitive touch screen

- > All program parameters can be viewed at a glance or changed in a moment

Stretch Control

- > Sensitive adjustment for waist size and leg length

Waistband tensioning device

- > Precise adjustment of waistband tensioning force is stored within the finish program
- > Extension of size spectrum through 2-dimensional waistband tensioning

VEIT Connectivity

- > Industry 4.0 connection enables the exchange of process data with manufacturing and ERP systems

**The outstanding performer
with industry 4.0 connection**



Control Panel

- > Modern control technology
- > New, intuitive operating concept
- > Touch Screen: All program parameters can be viewed at a glance or changed in a moment
- > Finish programs can be imported via barcode or RFID scanner



The basic model brings simplicity to trouser finishing

PF 30 Pants Finisher

Version with lateral tensioner for all kinds of fabric qualities with the reliable ZERO-STRETCH-Technology.

Your Benefits:

ZERO-STRETCH

- > Standard, for finishing of sensitive stretch fabrics

STRETCH Control

- > Sensitive adjustment to reach the required leg length

BODY Waistband Tensioning System

- > Waistband tensioning according to the shape of the human body

Up to 120 trousers in one hour!

Easy to operate

- > Size scale to reach the required waistband width
- > Stepless adjustment of loading height, incl. shorts
- > Easy and fast adjustment of the finishing parameters
- > Steam re-heater ensures best steam quality

Hem clamp system

- > Variable positioning of hem clamp system
- > Quick change from hem outside tensioning to hem inside tensioning

CASUAL WEAR



The basic version for individual requirements

8741 Pants Finisher

The unique modular system covers all application areas. Efficient and cost-effective finishing of short and long trousers.

Your Benefits:

VEIT-O-STRETCH

- > Patented electromotive carriage drive of the hem clamping device. Highly precise stretch control function (optionally with VEIT-O-STRETCH or anti-stretch leg) ensures damage-free finishing of even sensitive stretch fabrics

Loading height

- > Is easily adjustable in three steps using foot pedal (with option short trousers package)

Smooth and steady running of carriage

- > Significantly improves the finish quality

Waistband tensioning system "Body"

- > Tensions trousers two-dimensionally in a semi-circle to improve finish quality even further

Patented waistband tensioning devices

- > For long lifetime free of wear and tear
- > For Waistband size from 19–56 inch / 480–1430mm

The modular system

- > Allows a combination of the base unit with longitudinal or lateral waistband tensioning and many other options (see also page 11)



VEIT 8741

Pants Finisher

Belt drive for the hem clamps:

By using an electric motor instead of an air cylinder, **VEIT Pants Finishers are much more precise than any other Pants Finisher on the market.** This is very important for **sensitive garments** as the system will stop immediately as soon as the pre-set tensioning level is reached. After the hem clamps have stopped, they can either move upwards again a little, or can move downwards to further stretch the garment in order to avoid shrinkage.

Max. leg length (waistband-hem): 47 inch / 1200 mm.

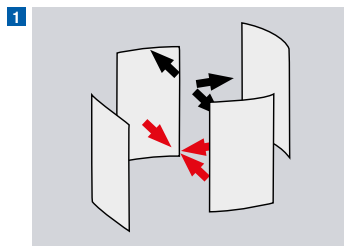
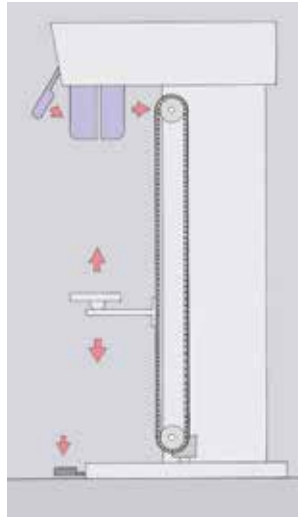
Waistband tensioning system "Body":

The unique semicircular VEIT waistband tensioning system "Body" forms the pants' waistband **according to the shape of the human body.** Unlike other pants finishers which extend the waistband only sideways, VEIT's waistband tensioning system "Body" also extends the pants' waistband to the back, **giving the pants a complete finish in the upper part of the trousers.**

VEIT-O-STRETCH:

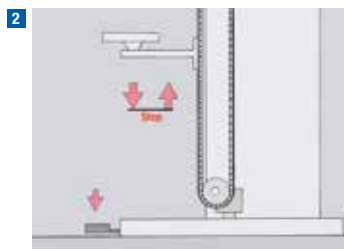
The VEIT-O-STRETCH package is the most elaborate anti-stretch function available on the market. It allows trouble-free processing of even the most delicate stretch fabrics.

It contains:



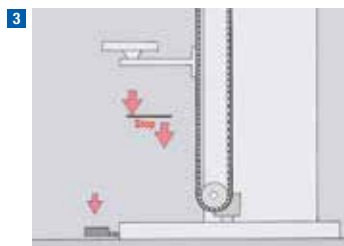
1 Waistband brake:

The waistband tensioning system is locked during the finishing process, so there is no pressure on the waistband. Therefore, the waistband will not be stretched during the steaming cycle (can be switched on/off).



2 Stretch-Control for leg length:

This function prevents unwanted extension of the legs by moving the hem clamps upwards as soon as a force on the hem clamps is detected.



3 Re-stretching for leg length:

An intentional and controlled overstretching of the pants' leg can be achieved with the adjustable Re-stretching function.



| | Basic |
|-------------------|-------|
| Stretch material | – |
| Very thick fabric | + |
| Size accuracy | 0 |
| Stretch-to-size | 0 |
| Shorts | – |
| Elastic waistband | + |



| | Medium |
|-------------------|--------|
| Stretch material | 0 |
| Very thick fabric | + |
| Size accuracy | + |
| Stretch-to-size | 0 |
| Shorts | ++ |
| Elastic waistband | + |



| | High |
|-------------------|------|
| Stretch material | ++ |
| Very thick fabric | ++ |
| Size accuracy | ++ |
| Stretch-to-size | ++ |
| Shorts | ++ |
| Elastic waistband | + |



| | Top |
|-------------------|-----|
| Stretch material | ++ |
| Very thick fabric | ++ |
| Size accuracy | ++ |
| Stretch-to-size | ++ |
| Shorts | ++ |
| Elastic waistband | ++ |

Basic

The Basic version is suitable for pants with no or very little stretch material in the fabric. With mechanic waistband brake and mechanic brake for the leg length, which avoids overstretching when set correctly. Only long trousers can be finished, no shorts!

- › Base module
- › Waistband tensioning system “Body”
- › Hem clamp system “Manual”
- › Fan with 550 W, electronically adjustable 0-100 %
- › Mechanic waistband brake
- › Mechanic brake for the leg length

Medium

The Medium version is ideal for pants with little stretch material in the fabric. Additionally to the Basic version, the Medium version has an anti-stretch function for the legs.

Furthermore it allows the finish of short trousers.

Like Basic version, additionally:

- › Hem clamp system “manual” incl. inside leg tensioners
- › Short trousers package
- › Air pressure separately adjustable for waistband and leg hem clamps
- › Anti-stretch function for the legs

High

The High version is suitable for all pants even with a lot of stretch material in the fabric. The VEIT-O-STRETCH package avoids any overstretching of the pants by combining a pneumatic waistband brake with an anti-stretch function for the leg. From jeans to very delicate stretch fabrics – this version can handle them all!

Like Medium version, additionally:

- › Fan with 750 W, electronically adjustable 0 - 100 %
- › Steam re-heater
- › VEIT-O-STRETCH incl. pneumatic waistband brake, anti-stretch and re-stretching function for the legs as well as stretch-to-size function
- › Program package: create and store up to 10 programs

Top

The Top version is ideal for all pants even with a lot of stretch material in the fabric. As an extra to the High version, the Top version contains lateral waistband clamps which hold the waistband neatly in place during the finish process at the side and at the back.

Especially good for pants with elastic waistbands or pants that shall be stretched a lot.

Like High version, additionally:

- › Lateral waistband clamps at sides and at the back
- › Hem clamp system with light sensors for higher productivity



BRI-231 SC

Trouser topper pressing machine

SC (Scissor Closing)

- > Scissor Closing

SPC micro control and LCD display

- > with 4 program memory slots or optionally with user-friendly 5.7" colour touch display

Steam edge suction

- > upper and lower buck

Automatic blowing with head buck distance

Options:

Trouser waistband clamp and stretching device

- > for improved handling

Quick height adjustment system for waistband, lateral and stretching function

- > Stretching distance can be adjusted to suit different styles and fabrics

Blowing via switch rail

- > (suction via switch rail is standard)



BRI-2001 SC

Utility pressing machine

SC (Scissor Closing)

- > Scissor Closing

SPC micro control and LCD display

- > with 4 program memory slots or optionally with user-friendly 5.7" colour touch display

Analog distance control and pressure control without spring balancing and manometer display

- > Perfect processing, even of delicate fabrics / Variable adjustment of the distance between the pressing bucks to avoid marks and shine on all types of fabric

Options:

Lower buck steam via pedal

- > As pre-steaming option and for pressing velvet fabrics

Lower blowing blowing

- > For finishing velvet fabrics



Tunnel Finisher /
Compact Finisher





Consistent finishing quality for any material

Thanks to the adjustable level of humidity in the spraying steam

Safe transport of the goods

with the conveyor and the VEIT hook system

Clearly separated processes

With roller unit between preconditioning and finish

No Condensate at conveyor

Suction at the entry prevents the formation of drops or stains on the garment

Finishing process visualized

The modern touch display can be flexibly positioned

Lower part of steam unit can be switched off when finishing basic garments

Yet another energy-saving feature

Efficient pre-conditioning of natural fibres

The moisture unit moisturizes the garments in order to achieve a never before seen finishing performance



High blowing power

The new generation of blowers is highly efficient and energy-saving, with minimum noise emission

Optimized finishing result

The extended air module increases performance

Maintenance-free chain tensing system

The pneumatic transport hook system is nearly free from wear and tear

Adjustable separation between steam and air module

Avoids marks on the goods during the finishing process

Impressive steam doll effect

The high-volume exit module adds extra volume to the garment



Moisture Module



Efficient preconditioning of natural fibres with water spraying technology

With its moisture module, the VEIT TF 57 Tunnel Finisher achieves unrivaled finishing results, even for difficult-to-process natural fibres.



The decisive factor for this stunning finishing quality is the high-pressure water spraying technology. The micro-fine nebulization allows the water to permeate into the fibre and makes it swell. The effect is amazing: Even hard creases, e. g. in linen garments or jeans, disappear. The unwelcome wash-effect is also avoided.

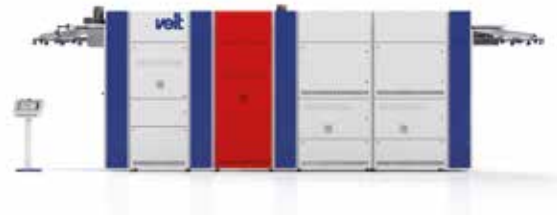
Lower energy consumption, higher efficiency

With the integrated moisture module, the Tunnel Finisher's total energy consumption clearly decreases. By using water as the sole energy carrier, energy-intensive steam consumption of the steam modules is significantly reduced. The amount of energy saved depends on the type of material.



Benefits at a glance:

- > Significantly improved finishing results for natural fibres
- > Lower total energy consumption
- > Higher efficiency



Steam Module

Adjustable and consistent steam quality for reliable finishing performance

VEIT sets standards in steam application: With the even spraying and the adjustable level of humidity, a consistent, effective finishing result can be achieved for all kinds of textiles.

The correct level of humidity in the steam spray is decisive for the finishing quality of the garment. With the steam module in VEIT's TF 57 Tunnel Finisher, it can be individually adjusted: wet steam for natural fibres, dry steam for synthetic fibres. Thus, customers can be sure to get an excellent effect for any type of material.

Consistent distribution of steam

The VEIT steam valve in combination with the special steam jet ensure even spraying and a homogenous distribution of steam. Unwelcome streaks on the garment are thus a thing of the past. Steam jets are deppened to prevent any damage to the garment.

New coating of interior walls

Due to a Teflon-resin coating, the inner walls of the steam module do not get hot and are very easy to clean.



The benefits are obvious:

- > Avoids garment damage from hot surfaces
- > Easy cleaning results to keep the machine in a good state

Air Module



Consistent, energy-efficient drying and smoothing

A reliable and effective air module is a decisive factor in achieving a maximum of crease elimination. To this effect, VEIT has equipped its Tunnel Finisher TF 57 with a particularly powerful blower.



The high performance of the generation of blowers is most obvious with high pass-through speeds. The dimensions of the inner tunnel with a height of 180 cm / 70.8 inch and a length extended to 125 cm / 49.2 inch allow an excellent finishing quality even for long textiles.

Optimized air circulation, perfect finishing

Air deflection, based on the wind tunnel principle, reduces flow losses to a minimum. Air circulation is channeled to the purpose of drying and smoothing the steamed goods as gently yet effectively as possible. Thanks to the efficient blower technology, the entire Tunnel Finisher needs much less energy. This effect is supported even further by the recycling of warm air in the circulating air modules.

Easy neutralisation of odours

Unpleasant odours in textiles can be effectively eliminated during the drying process by simply spraying a neutralising fragrance into the circulating air module.



Exit Module



Stunning steam doll effect makes good finishing perfect

In the exit module, the smoothed goods are brought to volume. So the top-quality finishing result meets the eye even more.

A particularly good effect of the elaborate air flow through the exit module can be achieved even with dense and padded garments. In order to get a steam doll effect, the garment is blown simultaneously from the top and from the bottom to receive its voluminous finishing touch.

The height of the exit module can be automatically adjusted to meet the length of the textile. This guarantees a maximum steam doll effect in all cases.

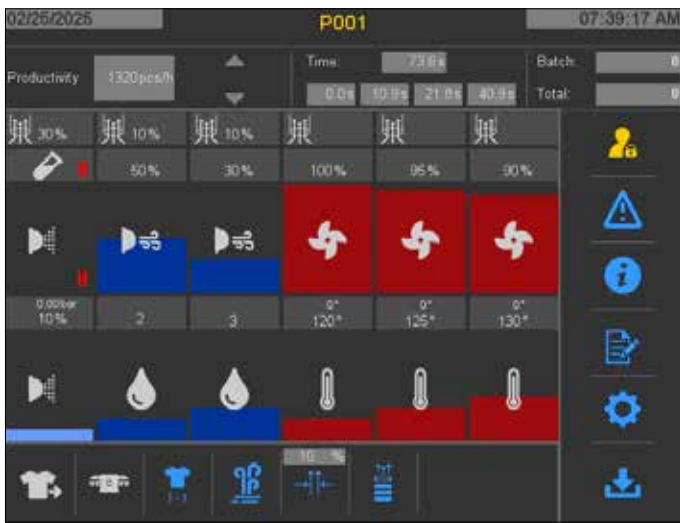


Touch Screen



Intuitive control for maximum efficiency

The user-friendly software of the VEIT Tunnel Finisher offers an intuitive user interface with a clear touch screen layout. All important functions are available at a glance to efficiently control the finishing process.



Clearly structured interface

- > **Start screen:** Shows the current operating status, temperature settings, steam settings and productivity.
- > **Program selection:** Predefined finishing programs for different textiles enable quick adaptation to different requirements.
- > **Manual settings:** Individual adjustment of parameters such as temperatures, steam quantity, fan and suction intensity.
- > **Diagnostic and maintenance functions:** Detailed error displays and maintenance instructions ensure high operational reliability and minimized downtimes.

Modern design and smart functions

Thanks to the modern touch screen control, the Tunnel Finisher can be customized with just a few taps. The software also supports multiple user profiles to save individual presets. The network connection enables remote monitoring and control, which allows efficient production planning and fast troubleshooting.

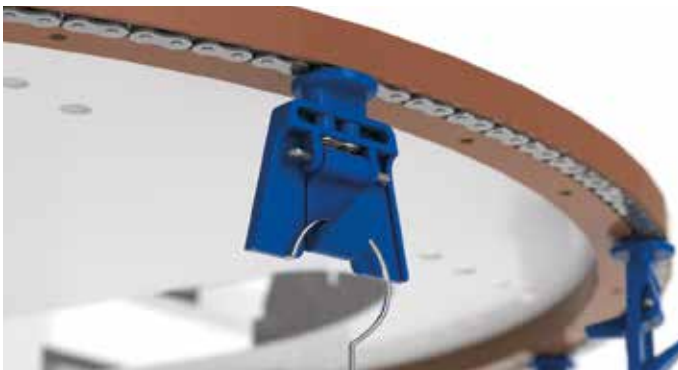




Transport Hook System

Safe and easy transport with a system

The transport hook system in our VEIT TF 57 Tunnel Finisher ensures smooth and careful transport of the garments through the Tunnel Finisher. And even better: It offers a wide variety of loading options.



The improved Conveyor System is driven by a maintenance-free chain system. The transport chain is guided in soft curves through sliding guides rather than via sprocket wheels. This method allows the system to work reliably with minimum maintenance.



For any kind of hangers and materials

The special form of the hooks and their distance of 25 cm from each other permit transporting almost any clothes hanger. Adjusting the loading station to the various hangers is easy, with no tools required.



Loading is extremely flexible and adjustable to the type, size and volume of the garment:

- › For light goods, each hook can be loaded
- › For more voluminous material, every second, third or fourth hook is needed
- › For easy-to-finish garments, two pieces may be loaded to one hook in order to save energy

Maintenance, remote maintenance and service

Maximum availability and reliable support

With regular maintenance, fast remote maintenance and professional service, we ensure that your machines run smoothly, downtimes are minimized and operational reliability is guaranteed in the long term.



Maintenance - maximum availability and long service life

Regular maintenance is essential to ensure the high performance and efficiency of the VEIT Tunnel Finisher.

Our maintenance concept offers:

- › **Preventive inspections** – Regular inspection of all key components such as the steam system, fan and conveyor system to detect wear at an early stage.
- › **Optimization of operating efficiency** – Checking the entire machine ensures smooth, consistent and energy-efficient operation.
- › **Original spare parts** – Use of high-quality spare parts specially developed for VEIT machines for maximum reliability.
- › **Minimizing downtime** – Targeted maintenance measures prevent unexpected breakdowns and extend the service life of the machine.

Remote maintenance contract - Fast help whenever you need it!

With the VEIT remote maintenance contract, you benefit from fast and efficient fault diagnosis and rectification - without long waiting times.

- › **Direct support** – Our experts analyze the machine status in real time and help you immediately via remote access.
- › **Software updates** – If required, updates can be easily installed via remote maintenance to improve performance and safety standards in a targeted manner.
- › **Reduced maintenance costs** – Many problems can be localized in advance by the service employee and often resolved without an on-site visit - this saves time and reduces costs.
- › **Maximum production reliability** – Through proactive monitoring, faults are detected early and rectified before they lead to downtime.

Take advantage of our customized **maintenance and remote maintenance package** to keep your production running smoothly and efficiently. Get in touch with us! Our experts will be happy to provide you with information in a personal consultation!

VEIT uses the OPC UA interface -
Future-proof connectivity for maximum efficiency!



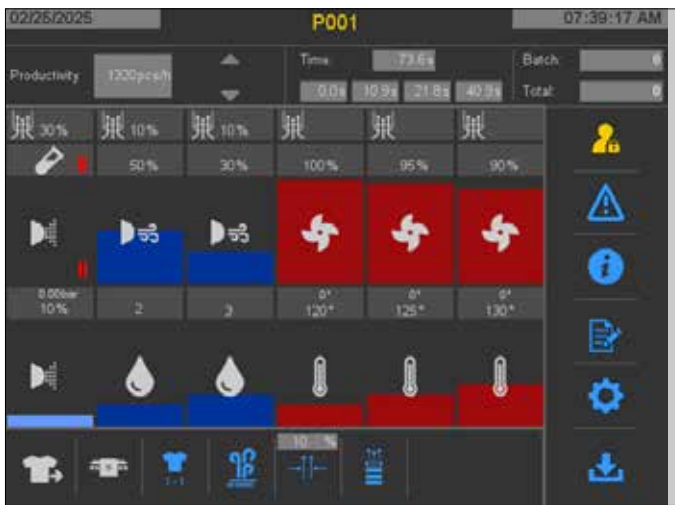
Advantages of the OPC UA interface:

- › **Platform-independent & standardized** – Seamless communication between different systems and manufacturers
- › **Real-time data transmission** – Reliable and fast provision of operating and sensor data
- › **Maximum security** – Encrypted data transmission and authentication for maximum operational security
- › **Easy integration** – Connection to MES, ERP and cloud systems without complex adaptations

Your Benefits

VEIT TF 57 Tunnel Finisher: high performance, low energy-consumption

Even better finishing quality with significantly less energy needed: The VEIT Tunnel Finisher generation sets standards in efficiency thanks to a whole bundle of technological innovations.



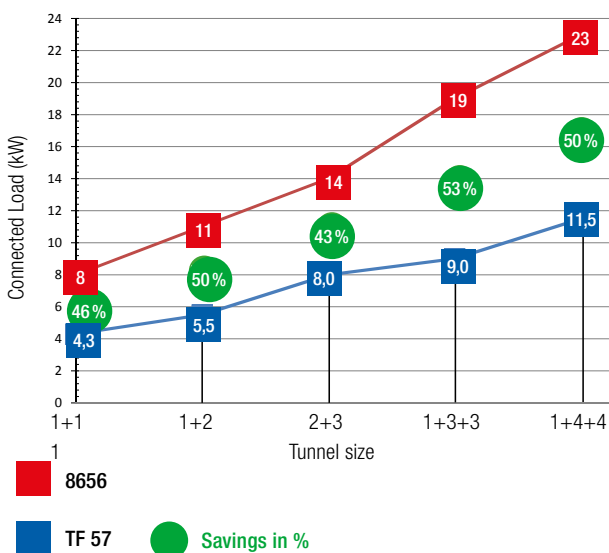
Plenty of process improvements help to significantly decrease total energy consumption as compared to previous models. In total, the Tunnel Finisher's connected load is lowered by approximately 40 per cent – a clear reduction in energy cost. An important feature here is the e-Decrease function, with very low airflow while the machine is in stand-by, allowing full performance to resume immediately after any idle team with no need to be heated up again.

The benefits in energy efficiency at a glance:

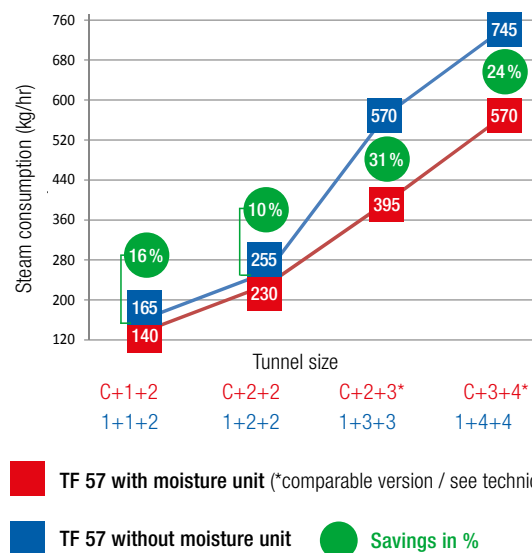
- › Efficient blower generation with high performance and reduced energy consumption
- › Fine spraying technology to lower the required steam quantities
- › Flow-optimised airflow to minimize losses
- › Recycling of warm air reduces energy consumption
- › Height-adjustable exit module for less heat loss
- › Insulation helps to save energy
- › E-Decrease function limits air flow from blower engines to about 10 percent during standby

| Connected load/ Consumption data | Moisture unit soft water consumption | Steam consumption average | Steam consumption maximum | Steam consumption savings | Medium output synthetic/blended fabric light cotton | Medium output cotton/linen |
|----------------------------------|--------------------------------------|---------------------------|---------------------------|---------------------------|---|----------------------------|
| VEIT TF 57 Module | l/h | kg/h | kg/h | kg/h | parts/h | parts/h |
| Type 1+1+2 | - | 165 | 265 | - | 900 | - |
| Type C+1+2 (Moisture unit) | 20–40 | 140 | 220 | 30–50 | 1000 | 700 |

Connected Load 8656 vs. TF 57



Steam savings with moisture unit



Modular Tunnel Finisher System for Maximum Flexibility

The VEIT TF 57 Tunnel Finisher is based on a modular system to allow a wide variety of individual solutions.

Requirements or applications have changed? No problem at all. Upgrading or extending a tunnel is easy.

Individual tunnel solutions can be implemented according to application, capacity and type of product that needs to be finished. For whatever combination is chosen, there is one common principle: The longer the tunnel, the faster the throughput of goods. VEIT experts are happy to individually discuss the most economical solution for any requirements.

A small selection of possible Tunnel Finisher variations:



Modules:

- 1 x Moisture module
- + 1 x steam module
- + 2 x air modules



Modules:

- 1 x pre-heating module
- + 3 x steam modules
- + 3 x air modules



Modules:
1 x pre-heating module
+ 4 x steam modules
+ 4 x air modules



Modules:
1 x Moisture module
+ 5 x steam modules
+ 5 x air modules

We have the perfect solution for your requirements –
from laundry shops to logistics centres.
Just contact us!

CF 20 Compact Finisher

Our big little one

We have adapted our proven Tunnel Finisher technology to your company size!
With the new CF 20 Compact Finisher, you can take the next step towards automated finishing of your garments in smaller quantities.



For medium-sized businesses including:

- > E-commerce retailers
- > Clothing production
- > Laundries
- > Dry cleaners
- > and many more

CF 20 Compact Finisher

Sluice gate separation unit

INSIDE: Process separation between steam and air unit

OUTSIDE: Energy efficiency through hermetic sealing

Air unit

High blower output for optimum finish of the fabric

Transport System

Safe transport of the goods with proven VEIT hook system

Steam unit

Regulated steam moisture for consistent quality

Control

User-friendly due to intuitive operating concept



Your Benefits:

Perfect finish result

- > Due to longer exposure time on the textile in a closed atmosphere

Easy integration

- > Into existing processes for efficient work flows
- > Into existing logistics systems

Time saving

- > Through automatic loading and unloading
- > The automated process creates free capacities

Space-saving

- > Due to compact size

Steam unit

- > Even steaming for consistent and effective finish results

Air Unit

- > Consistent, energy-efficient drying and smoothing

Touch Screen

- > Centralised control through the user-friendly operating unit

Maintenance and Service

- > For the CF 20 Compact Finisher, VEIT offers online support as an optional service. Your benefit: short reaction times in the event of malfunctioning or production standstills. Processes can be addressed directly at any time.

Casual Wear

| Type | Page | Connections | | | | | | |
|--------------------------|------|------------------------|----------------------|------------------------------|------------------------------|----------------------------|----------------|---|
| | | Capacity / hour pieces | Steam 5–7,5 bar 3/8" | Condensate max. 0,5 bar 3/8" | Suction min. 120 mbar 1 1/2" | Compressed air 6 bar D=8mm | Blowing D=12mm | Voltage Volt / kW |
| Universal Finisher UF 30 | 4 | 60–250 | 1/2" | 1/2" | – | – | – | 220–240 V / 2 kW / 50/60 Hz |
| Multiform 8363 Basic | 5 | 60–80 | 1/2" | 1/2" | – | 6 mm / 1/4" | – | 200–240 V / 1,5 kW / 50/60 Hz |
| Multiform 8363 Classic | 6 | 60–80 | 1/2" | 1/2" | – | 6 mm / 1/4" | – | 200–240 V / 1,5 kW / 50/60 Hz |
| Pants Finisher PF 30 | 8 | bis zu 120 | 1/2" | 1/2" | | | | 220–230 V / 50 Hz 220–240 V / 60 Hz 1.08 kW |
| Pants Finisher PF 50 | 8 | | 1/2" | 1/2" | | | | 220–230 V / 50 Hz 220–240 V / 60 Hz 1.7 kW |
| Pants Finisher PF 50-3D | 9 | | 1/2" | 1/2" | | | | 220–230 V / 50 Hz 220–240 V / 60 Hz 1.7 kW |
| Pants Finisher 8741 | 9-11 | 80–120 | 1/2" | 1/2" | – | 6 mm / 1/4" | – | 200–240 V / 0,92 kW / 50/60 Hz |
| BRI-231 SC | 12 | 40–60 | 3/8" | 3/8" | 1 1/2" | D = 8 mm | 1 Option | 230–240 V / 0,15 kW / 50–60 Hz |
| BRI-2001 SC | 12 | 40–60 | 1/2" | 3/8" | 2" | D=12 mm | – | 230–240 V / 0,15 kW / 50–60 Hz |

| Type | Dimensions | | Consumption | | | |
|--------------------------|-------------------------------------|-------------------------|-------------|--------------------|------------------------|------------------------------|
| | L x W x H mm | Weight kg | Steam Kg/h | Suction l/min | Compressed Air l/cycle | Compressed Air Blowing l/min |
| Universal Finisher UF 30 | 700 x 687 x 1510 | 105 95 ³⁾ | 15 | – | – | – |
| Multiform 8363 Basic | 900 x 950 x min 1460 – max 2260 | 165 | 15 | – | 3 | – |
| Multiform 8363 Classic | 980 x 1160 x min 1570 – max 2370 | 175 | 15 | – | 3 | – |
| Pants Finisher PF 30 | 960 x 640 x 2200 | | 15 | – | | – |
| Pants Finisher PF 50 | 1250 x 1080 x 2140 | | 15 | – | | – |
| Pants Finisher 8741 | 642 x 1013 x 1946 | 180 | 15 | – | 4 | – |
| BRI-231 SC | 1075 x 1060 x 1600 | 250 | 12 | 3500 ¹⁾ | 54 ¹⁾ | 416 ¹⁾ |
| BRI-2001 SC | 1500 x 1400 x 1600 | 530 | 18 | 2800 | 45 | 139 |

Subject to change. All specifications have been made to the best of our knowledge.

¹⁾ Calculated with 9 hits per trouser. 40 trousers/h.

²⁾ with extended sleeve tensioners

³⁾ with garment attachment

Page 31:

¹⁾ Average value. Individual usage may vary based on quantity and type of clothing.

²⁾ Average value. Individual usage may vary based on options and conveyor system.

³⁾ Installation of an air curtain module between the steam and air circulation modules requires an additional 100 mm (3.9 in) height.

■ = Standard equipment □ = Optional equipment – = not possible

Tunnel Finisher

| Standard models | CF 20 | C+1+2 | C+2+2 | C+2+3 | C+3+4 | 1+2 | 1+2+2 | 1+3+3 | 1+4+4 |
|--|-------------------------------------|-------------------------------------|-------------------------------------|-------------------------------------|-------------------------------------|-------------------------------------|-------------------------------------|-------------------------------------|-------------------------------------|
| Average capacity (pc/hr) | 180 | 1000 | 1500 | 1600 | 2200 | 1000 | 1400 | 1500 | 2000 |
| Air volume (passage width 260 mm) (m³/hr) | | 13000 (15600) | 10500 (23400) | 10500 (23400) | 26000 (31200) | 13000 (15600) | 19500 (23400) | 26000 (31200) | 32500 (39000) |
| Average steam cons. (kg/hr) ¹⁾ | 70 | 140 | 230 | 255 | 370 | 140 | 255 | 370 | 485 |
| Average water consumpt. (l/hr) | – | 50 | 50 | 50 | 50 | – | – | – | – |
| Electrical load (kW) ²⁾ | 3 | 7,7 | 7,7 | 8,4 | 10,9 | 6,7 | 8 | 9 | 11,5 |
| Dimensions and Weight | | | | | | | | | |
| Length without / with Conveyor (mm / in) | 2700/ 5500 106/217 | 6300/8870 248/349 | 7300/9875 287/389 | 8560/11100 337/437 | 10815/13385 426/527 | 7065/9735 278/383 | 6625/9325 260/367 | 8885/11585 349/456 | 11145/13845 456/545 |
| Height - min. (+ 150 mm / 6 in adjustable range) (mm / in) | 2200/ 87 | 2780 (10)/ 109 (0,4) | 2780 (10)/ 109 (0,4) | 2780 (10)/ 109 (0,4) | 2780 (10)/ 109 (0,4) | 2780 (10)/ 109 (0,4) | 2780 (10)/ 109 (0,4) | 2780 (10)/ 109 (0,4) | 2780 (10)/ 109 (0,4) |
| Width (conveyor door side) (mm / in) | | 1650/65 | 1650/65 | 1650/65 | 1650/65 | 1650/65 | 1650/65 | 1650/65 | 1650/65 |
| Width (conveyor control side) (mm / in) | | 1200/47 | 1200/47 | 1200/47 | 1200/47 | 1200/47 | 1200/47 | 1200/47 | 1200/47 |
| Net Weight (kg/lb) | 1250/ 2756 | 2650/5842 | 3000/6613 | 3400/7496 | 4500/9920 | 1900/4189 | 2700/5952 | 3600/7936 | 4600/10141 |
| Equipment | | | | | | | | | |
| Conveyor height (mm / in) | 1420/56 | – | – | – | – | 1810/72 | 1810/72 | 1810/72 | 1810/72 |
| Entry roller unit | – | <input checked="" type="checkbox"/> | <input checked="" type="checkbox"/> | <input checked="" type="checkbox"/> | <input checked="" type="checkbox"/> | <input checked="" type="checkbox"/> | <input checked="" type="checkbox"/> | <input checked="" type="checkbox"/> | <input checked="" type="checkbox"/> |
| Water jet rows (5 jets per row) | – | 2 | 2 | 2 | 2 | – | – | – | – |
| Preconditioning module with moisture intake from steam module | – | – | – | – | – | – | 1 | 1 | 1 |
| Steam modules with regulated steam suction | 1 | 1 | 2 | 2 | 3 | 1 | 2 | 3 | 4 |
| „Direct-blow“ air circulation modules | 1 | 2 | 2 | 3 | 4 | 2 | 2 | 3 | 4 |
| Steam nozzle-rows/16 nozzles | 8 | 8 | 16 | 16 | 24 | 8 | 16 | 24 | 32 |
| Steam quality control | <input checked="" type="checkbox"/> | <input checked="" type="checkbox"/> | <input checked="" type="checkbox"/> | <input checked="" type="checkbox"/> | <input checked="" type="checkbox"/> | <input checked="" type="checkbox"/> | <input checked="" type="checkbox"/> | <input checked="" type="checkbox"/> | <input checked="" type="checkbox"/> |
| Teflon resin coated steam module | <input checked="" type="checkbox"/> | <input checked="" type="checkbox"/> | <input checked="" type="checkbox"/> | <input checked="" type="checkbox"/> | <input checked="" type="checkbox"/> | <input checked="" type="checkbox"/> | <input checked="" type="checkbox"/> | <input checked="" type="checkbox"/> | <input checked="" type="checkbox"/> |
| Exit module, air rollers / "high-volume" manual | – | <input checked="" type="checkbox"/> | <input checked="" type="checkbox"/> | <input checked="" type="checkbox"/> | <input checked="" type="checkbox"/> | <input checked="" type="checkbox"/> | <input checked="" type="checkbox"/> | <input checked="" type="checkbox"/> | <input checked="" type="checkbox"/> |
| Loading separator | <input checked="" type="checkbox"/> | <input checked="" type="checkbox"/> | <input checked="" type="checkbox"/> | <input checked="" type="checkbox"/> | <input checked="" type="checkbox"/> | <input checked="" type="checkbox"/> | <input checked="" type="checkbox"/> | <input checked="" type="checkbox"/> | <input checked="" type="checkbox"/> |
| Options | | | | | | | | | |
| Non-touch Air curtain module ³⁾ | – | <input type="checkbox"/> | <input type="checkbox"/> | <input type="checkbox"/> | <input type="checkbox"/> | <input type="checkbox"/> | <input type="checkbox"/> | <input type="checkbox"/> | <input type="checkbox"/> |
| High volume exit module with automatic height adjustment | – | <input type="checkbox"/> | <input type="checkbox"/> | <input type="checkbox"/> | <input type="checkbox"/> | <input type="checkbox"/> | <input type="checkbox"/> | <input type="checkbox"/> | <input type="checkbox"/> |
| Steam suction at entrance module | – | <input type="checkbox"/> | <input type="checkbox"/> | <input type="checkbox"/> | <input type="checkbox"/> | <input type="checkbox"/> | <input type="checkbox"/> | <input type="checkbox"/> | <input type="checkbox"/> |
| Integrated steam distribution pipe | <input checked="" type="checkbox"/> | <input type="checkbox"/> | <input type="checkbox"/> | <input type="checkbox"/> | <input type="checkbox"/> | <input type="checkbox"/> | <input type="checkbox"/> | <input type="checkbox"/> | <input type="checkbox"/> |
| Control unit on pedestal | – | <input type="checkbox"/> | <input type="checkbox"/> | <input type="checkbox"/> | <input type="checkbox"/> | <input type="checkbox"/> | <input type="checkbox"/> | <input type="checkbox"/> | <input type="checkbox"/> |
| Hook interval range (mm / in) | 300 | > 250 (>10) | > 250 (>10) | > 250 (>10) | > 250 (>10) | > 250 (>10) | > 250 (>10) | > 250 (>10) | > 250 (>10) |
| Scent infusion | – | <input type="checkbox"/> | <input type="checkbox"/> | <input type="checkbox"/> | <input type="checkbox"/> | <input type="checkbox"/> | <input type="checkbox"/> | <input type="checkbox"/> | <input type="checkbox"/> |
| Computer network compatible (e.g. for remote maintenance /RFID) | <input type="checkbox"/> | <input type="checkbox"/> | <input type="checkbox"/> | <input type="checkbox"/> | <input type="checkbox"/> | <input type="checkbox"/> | <input type="checkbox"/> | <input type="checkbox"/> | <input type="checkbox"/> |
| Synchronized loading | – | <input type="checkbox"/> | <input type="checkbox"/> | <input type="checkbox"/> | <input type="checkbox"/> | <input type="checkbox"/> | <input type="checkbox"/> | <input type="checkbox"/> | <input type="checkbox"/> |

The VEIT Group



Pressing for Excellence – Why you can rely on the VEIT Group

The VEIT Group is based in Landsberg am Lech (Germany) and is the leading manufacturer worldwide for machines and plants in the field of ironing, fusing, pressing and refinishing of garments. Our product portfolio ranges from traditional ironing tables and presses to fusing machines and also includes automated units.

VEIT Group: the story of our success

- 1956 Foundation of VEIT Group with now 14 companies in 12 countries worldwide
- 1989 Purchase of BRISAY, Aschaffenburg, with a portfolio of cutting-edge ironing machines
- 2001 Acquisition of Kannegiesser GTT in Vlotho with their internationally renowned fusing machines and shirt ironing machines
- 2003 Production and further development of Kannegiesser products through VEIT
- as of 2014 Distribution of Kannegiesser products exclusively under the VEIT brand name

Quality

For 70 years, our customers' requirements and challenges have been our driving force to press for excellence. For decades, world famous brands in the German and international garment industry have placed confidence in the innovative, high quality products and services offered by the VEIT Group.

Efficiency

Our experts consult and partner with you in finding the best possible solution for your project needs, whether you require individual machines or a complete product line.

Service

Prompt delivery and professional installation of our machines and systems go hand in hand with premium training, through which we equip your staff with the skills necessary to achieve the highest possible production.



VEIT GmbH

Justus-von-Liebig-Str. 15
 86899 Landsberg am Lech
 Germany
 Tel. +49 (8191) 479-100
 E-Mail: info@veit.de
www.veit-group.com

Your local sales agent:

